

OSPREY FLY BOX

Idaho Nymph

contributed by

Dianne Wenham

My introduction to fly fishing was on Anahim Lake about 12 years ago. I was fishing with some longtime friends who were bringing in fish after fish. I could only watch in amazement and some degree of frustration as I practiced my knot tying skills by changing flies with some regularity. With still no more success. This is rather hard to believe on Anahim Lake as it hard not to catch a fish on that abundant populated lake. I finally asked them what fly they were using and was introduced to the Idaho Nymph. Since that time, it has been one of my favourite flies when searching for fish or just paddling around exploring a lake.

I was quite surprised to see that it had not made it into the Osprey Fly Box. And, that no one seems to know much about the origins of this classic fly. The earliest reference I was able to find was a mention in an online forum from the "Washington Flyfishing" website that claims the fly goes back as early as 1973. The fly is well known in the Pacific Northwest, particularly in BC, but no one seems to know where the "Idaho" comes from. It is also included in the Kalamalka Flyfishers recent publication, "Flies &

Fly Fishing Techniques for BC Interior Lakes" where they include two variations.

The classic/original version of the Idaho Nymph has a black body and white goose quill wing case. There are other versions out there using different materials for the body and changing up the wing case colour (red, being a popular option). The version I was introduced to at Anahim and have had great success with on Anahim Lake and on a number of different Interior lakes, substitutes an iridescent blue-green (Peacock Herl colour) Mylar for the white Thorax/wing case.

The following pattern is a variation on Bob Tait's "Red Back Idaho Nymph" pattern contained in the Kalamalka Fly Fishers book reference earlier, substituting blue-green Flashabou or Mylar Tinsel for the red Crystal Flash or yarn and silver for red wire.

Fish this fly close to the bottom and retrieve in short jerky strips or slow troll (this is a good way to explore a lake drop off area or weed beds).

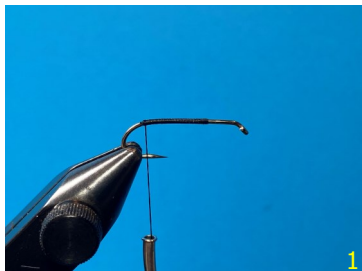
MATERIALS



List of Materials:

- Hook - Mustad 3906B 1XL Nymph hook #10-12
- Thread - 6/0 UNI black
- Tail - 6-10 black hackle fibres
- Rib - Silver Wire Small
- Body - Black Dubbing or Black Marabou
- Wingcase - Blue-green/iridescent green flashabou or mylar tinsel (play around with the colour – what seems to work are the iridescent properties)
- Thorax - 2 strands of Peacock Herl
- Beard - 6-10 Black Hackle fibres

TYING INSTRUCTIONS

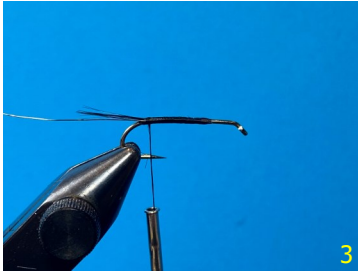


1. Debarb the hook, tie on the thread at the 1/3 point on the shank, this helps with the thorax size later, and take it down to the hook bend.
2. Select 6-10 Black Hackle fibres and tie them in at the hook bend ensuring the tail in no longer than 1/3 of the hook length. Return the thread to the Start of the Thorax about 1/3 the way down the shank from the eye.



TYING INSTRUCTIONS

..... *continued*



3



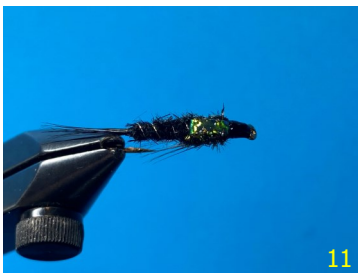
5



7



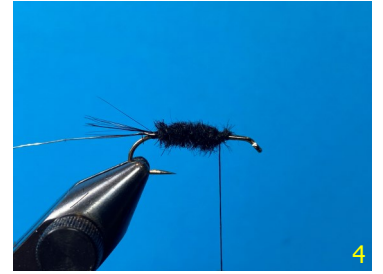
9



11

3. Tie in the Silver Wire and bind down to the tail.
4. Make a dubbing loop with the Black dubbing and dub the body up to where you started the thres about 1/3 of the shank from the eye, forming a slim body. Ensuring you have enough room for the Peacock Herl Thorax & Beard.
5. Counter wrap the Silver Wire up to the start of the Thorax about 1/3 behind the eye.
6. Where you tied off the rib tie in the blue-green Flashabou or Mylar Tinsel. Snip the brittle tips of 2 strands of Peacock Herl and tie them in.
7. Wrap the Peacock Herl up to hook eye overlapping as you go to build a full Thorax. Tie it off. If you want to make the Peacock Herl last for more than a couple of fish you can sandwich it between two stands of thread and twist it together like a dubbing loop before forming the Thorax.
8. Pull the Blue-Green Flashabou or Mylar Tinsel and bring it forward over the top of the Peacock Herl to create wing case. Tie off.
9. Select 6-10 Black Hackle fibres and tie in on underside of Thorax to form a beard.
10. Build up a neat thread head and whip finish. Finish with head cement.
11. View from the above the fly.

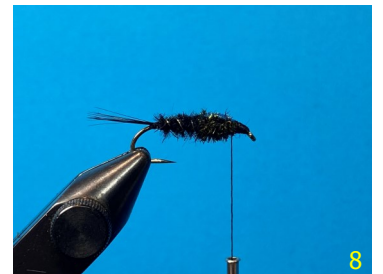
Tight Lines & Good Luck!



4



6



8



10